

Thumbs and Grapples

Hold everything. Our thumbs and grapples deliver the strength, the power and the flexibility to handle whatever a job site throws at them. From hardcore demolition to rock handling to severe land clearing jobs, these tough attachments are the right choice for any job that requires maximum clamping, prying and breakout force.

Get a **grip** on your next **big project.**

Weld-On Stiff Arm Thumbs

- Multi-position thumbs for optimum performance
- Y-yoke thumb adjustment for specific thumb positioning
- T-1 steel construction for greater strength and longer wear life
- Low profile thumb storage for better visibility

Progressive Link Hydraulic Thumbs

- Press-in bushing
- Large rod diameter with 1/2" wall housing
- Multiple T-1 steel fingers for rugged construction
- Lock-back bracket prevents thumb from drifting when not in use
- Recessed zerk with housing
- Threaded six bolt reinforcement cap
- Larger bolt diameter for thumb pin retention
- Spherical bearings in hydraulic cylinder and in the progressive link to thumb
- Grease zerk bracket for hydraulic cylinder safety
- Thick-wall tubing for multiple finger placement

Weld-On Hydraulic Thumbs

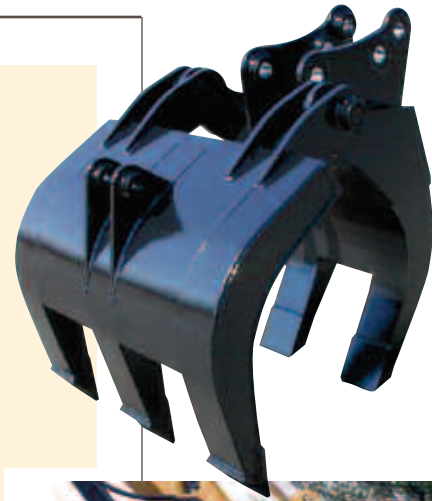
- Hydraulic action for versatile thumb positioning
- Low profile thumb storage for better visibility
- Grease zerks recessed for protection from the elements
- Multiple T-1 steel fingers for rugged construction and a longer wear life
- Larger bolt diameter for thumb pin retention
- Heavy-duty hydraulic cylinder with threaded six bolt reinforcement
- Spherical bearings in hydraulic cylinder
- Thick-wall tubing for multiple finger placement
- Press-in bushing

Main Pin Hydraulic Thumbs

- Efficiently operates on smaller machines
- Integrated design on side plates and fingers for greater strength
- Special finger serration for increased holding ability
- Minimal welding required for installation onto the machine
- Linkage allows a rotation of up to 140° for maximum grapping

Hydraulic and Stiff Arm Grapples

- Available in both stiff arm and hydraulic cylinder
- Offset hinge design allows use of original bucket pins
- Alloy construction throughout
- Independent hinge pins in double shear for increased pin life and durability
- Hardened, replaceable bushings in hinge
- Double-wall box beam construction with internal bulkheads
- Vertical ribs extend full length on fixed and movable jaw
- Hardox 400 wear pads
- Spherical bearings on both ends of cylinder reduce pin wear and increase serviceability



Couplers and Attachments

FOR EXCAVATORS



Your **partners** in **productivity.**

Unmatched quality. Unsurpassed ingenuity. Uncompromising service. They're not just hallmarks of the Paladin family of brands. They're what make us one of the most trusted names in the North American construction industry.

At Paladin, you'll find a commitment to excellence that you can feel in the quality of our products — in their rugged, year-in, year-out durability, and in the skill and inspiration of their designs. And you can see it in our unwavering

dedication to do whatever it takes to keep you up and running.

From light to heavy construction, from utility to demolition, from recycling to forestry — whatever your business, Paladin brings you a full line of attachments you can count on for greater versatility and productivity. Because we offer brand names you know and trust — like JRB, C&P and Badger — you can turn to Paladin for the tough, long-lasting equipment you need to work harder, smarter and better.

DISTRIBUTED BY

For complete details and specifications contact:

Paladin Heavy Construction
820 Glaser Parkway, Akron, Ohio 44306
800-4-BUCKET (800-428-2538)
Sales Fax: 330-734-3018
www.paladinbrands.com

U.S. Patent Pending
Specifications subject to change without notice.
©2006 JRB Attachments, LLC Printed in U.S.A JRB - 01/06



PALADIN HEAVY CONSTRUCTION



PALADIN HEAVY CONSTRUCTION

Excavator Couplers



Hook up with Paladin's line of smart, powerful couplers, and watch your productivity soar. Designed to lock on fast and lock on tight, our couplers deliver versatility, speed and security when it matters most. Whether your job calls for pin-on or quick hitch couplers, count on Paladin for the rough-and-ready tools that will minimize downtime in no time.



Hydraulic Couplers

SmartLoc® Coupler

- Automatically sequenced Secondary Lock
- Wedge Locking System adjusts for wear keeping a tight connection
- Maintains small vertical offset, keeping the alignment closer to the machine
- Includes one set of attachment pins

RotoLoc® Coupler

- Automatically sequenced Secondary Lock
- Adjusts to various pin spreads
- Accepts multiple pin diameters
- Maintains small vertical offset keeping the attachment closer to the machine
- Safety Lock is visible from the operator's cab
- Able to connect in the reversed position for "shoveling"
- Includes one set of machine mounting pins

PinLoc

- Manual Pin Secondary Lock
- Wedge Locking System adjusts for wear keeping a tight connection
- Maintains small vertical offset keeping the attachment closer to the machine
- Able to connect in the reversed position for "shoveling"
- Includes one set of attachment pins

PowerLoc

- Manual Pin Secondary Lock
- Additional Pin Hole placement for increased power

- A514 (T1) Steel construction for severe duty & demolition applications
- Wedge Locking System adjusts for wear keeping a tight connection
- Includes one set of attachment pins

Mechanical Couplers

Direct Pin Coupler

- One-release pin design
- Ideal for hammers or compaction wheels

Mechanical Excavator Coupler

- No need to install hydraulics on machine
- Cam locking system captures attachment pin completely
- Wrench is stored within the coupler in both the lock and unlock position
- Push-pin secondary lock

Quick Hitch Coupler

- Exterior attachment to bucket allows complete capacity usage
- Eliminates the use of restrictive pin-on attachments
- Features mechanical design with spring-applied hydraulic release
- Attachment versatility reduces attachment change-over process
- Maintains breakout force by maintaining original equipment geometry
- Quick Hitch attachments available

Specialty Attachments

Versatility – An attachment for every job.

When a job throws you a curve, trust our line of outstanding specialty attachments to set things straight. From general purpose buckets to concrete pulverizers, and compaction wheels to shears, we have all the equipment you need to load, dump, cut, and compact your way to productivity. Designed for maximum durability and functionality, these tough performers keep you going strong and on top of your bottom line.



Trapezoidal Buckets

Trapezoidal Buckets

- Heavy duty or severe duty available
- Standard equipped with adjustable boss and shim pack
- Ear mounting built to OEM specs
- Customized teeth options
- Standard equipped with lift eyes
- Open throat design for easy loading and dumping
- 40% stronger than buckets with lower bridge

Ditch Cleaning Buckets

- Bolt-on edge available for longer life
- Abrasion resistant double bottom for longer bucket life
- Center gusset available for most models
- Ideal for storm ditch cleaning



Sand Buckets

Swinger Excavator Buckets

- An ideal addition for your excavator. Ditching, slope work, grading, back filling, land clearing, and waste handling applications
- Available as pin on or package priced with the JRB SmartLoc® Quick Coupler. This quick change ability increases productivity
- Cylinders protected from outside debris, damage, etc.
- Tilts in 45 degree angle in two directions
- Available in widths from 48" to 96"
- Available in capacity sizes from .60 to 3.00 cubic yards.
- Manufactured for excavators weighing from 25,000 through 100,000 pounds

Ear Blanks and Side Cutters

A variety of custom-made ear blanks and machine specific side cutters are available

Pavement Removal Buckets

- Heavy-duty OEM ear group mounting with adjustable boss standard
- High-strength alloy steel construction for durability
- Standard equipped with enclosed lifting eye
- Buckets are shot-blasted, primed, and painted to match OEM specifications
- Esco, Hensley, or CAT style teeth available

Compaction Wheels

- Open-spoke design provides for a mixing and crumbling of materials
- Self-cleaning design reduces material build up around pin and bearings
- Sheeps foot or wedge pad design available for different soil mixture varieties and conditions
- Mechanical product, no hydraulics to hook-up or install
- Use excavator for downward force on wheels.
- Ease of disassembly for routine maintenance and inspection
- Abrasion resistant steel construction for improved wear



Ditch Cleaning Buckets

- Eliminates need for worker in trench, reducing time in dangerous trenches
- No vibration damage to machine
- OEM pin spacing and diameters for pin-on or quick couple use
- Standard - bolt-on ear group for machine interchangeability

Sand Buckets

- Round or flat bottom available
- All widths and capacities available
- Standard equipped with adjustable boss and shim pack
- O-ring parking grooves on inner bosses for easy installation
- Ear mounting built to OEM specs
- Draft and side relief for easier loading, dumping, and cleaning
- Open or closed top available
- Vertical or horizontal wear bars available
- Standard equipped with lift eye mounted on reinforcing bar for ear tail support

Hydraulic Tilt Blades

- Handles as much or more dirt per cycle in digging and loading applications as a bucket
- Design makes occurrence of material sticking to the blade less likely
- Hydraulic cylinders allow 45 degree angling right or left
- Precise hydraulic control assures ditching applications will be smooth and efficient
- Excellent visibility allows operator to work quickly and accurately
- Allows a single machine to dig and load material, backfill quickly, and grade more precisely and effectively than a standard excavator bucket



Pavement Removal Buckets



Compaction Wheels



Tilt Blades

Excavator Buckets



You want tough? Our powerful line of excavator buckets bury the competition with smart, sturdy features like our rugged triangle fabrication, high-strength alloy steel construction, an abrasion-resistant double bottom and our long-lasting side wear pads. Whether you're cleaning up or digging in, count on our buckets to work as hard as you do.

General Purpose Buckets, Heavy Duty Buckets, Severe Duty Buckets, and Extra Severe Duty Buckets

- Light-weight for higher capacity loads
- High strength alloy steel construction
- Triangle fabrication for greater strength and stability
- Abrasion resistant double bottom for longer bucket life
- Side wear pads for extra durability
- T-1 Cutting edge with triple pass welding
- Full side to side wear straps
- Single and twin tiger teeth available for extreme digging requirements
- Esco, Hensley, CAT, or Metalogenia KingMet teeth and shank available
- Ripper design reduces stress exerted on machine
- Powerful ripping ability for caliche, frost, or rock
- Compatible with most pin-grabbing couplers
- Available as pin-on or Quick Hitch attachment

Heavy-Duty Rippers, Severe-Duty Ripping Buckets, and "V" Bottom Buckets

- One-piece T-1 Power Curve side cutters
- Side wear pads for extra durability
- Single and twin tiger teeth available for extreme digging requirements
- Esco, Hensley, CAT or Metalogenia KingMet teeth and shank available. Combi wear parts
- Triangle fabrication for greater strength and stability
- T-1 Cutting edge with triple pass welding
- Abrasion resistant double bottom for longer bucket life
- Extended Wear Straps for better protection

